

# Table of Contents


Overlay IV .....	2
Overlay .....	2
History .....	4

# Overlay IV

## Daily Comparison

### Overlay

Create or open a project.

Click on the **Create Overlay Chart** button  and the following window appears:

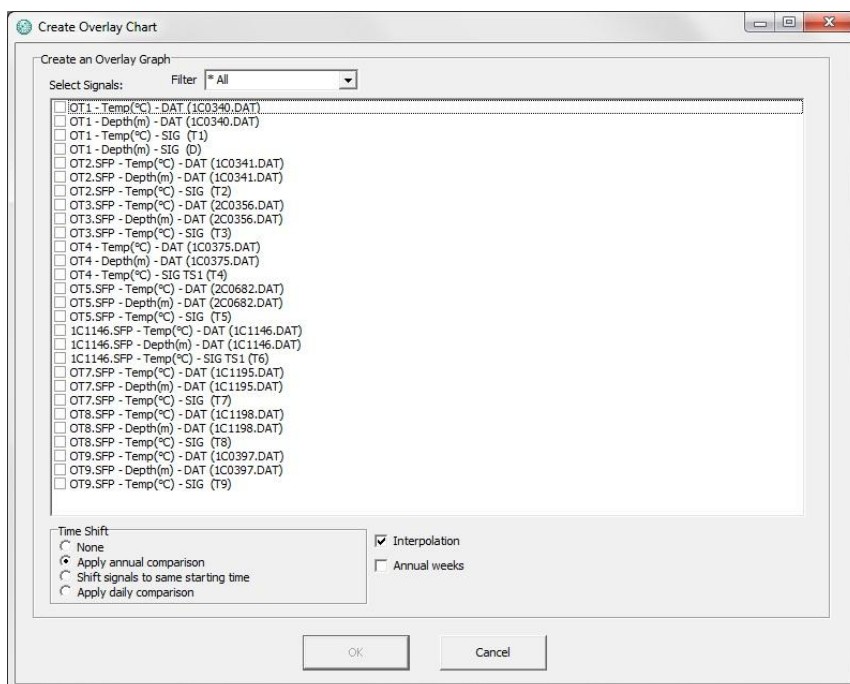


Figure 1 Create overlay chart

Select the signals you want to overlay. You can filter the signals by selecting one of the options in the drop-down list (see figure 2).

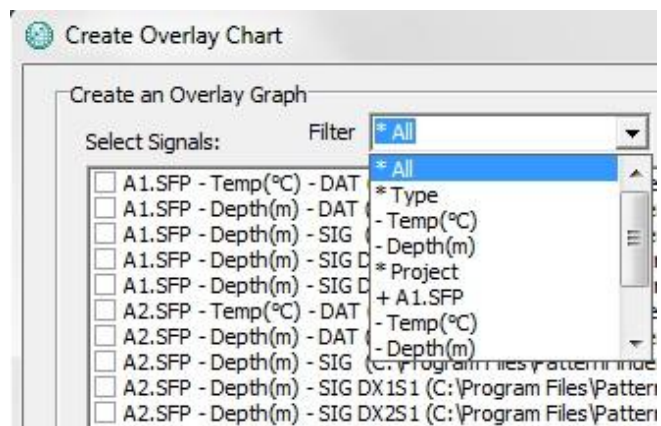


Figure 2 Filter

Under **Time Shift** select **Apply daily comparison** and **Interpolation** (see figure 1)

Once the signals have been selected, click **OK**

The following chart appears:

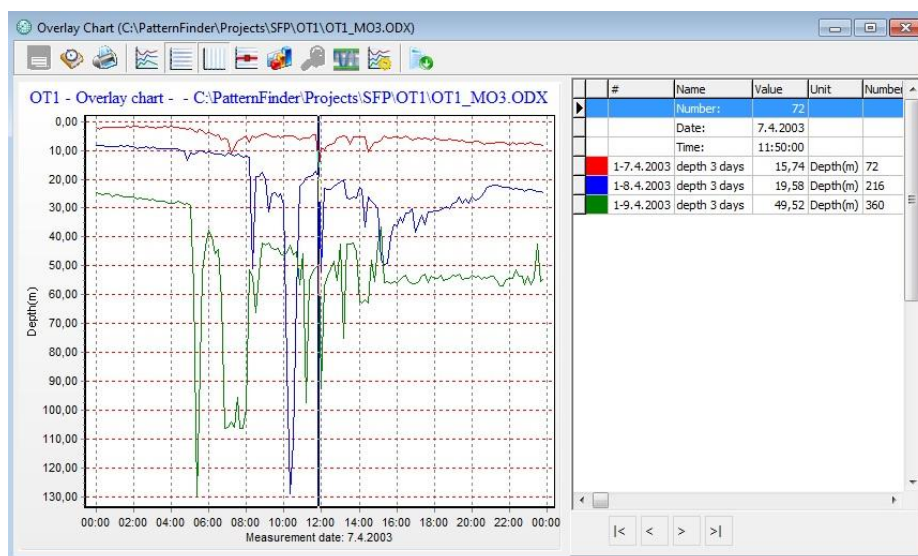



Figure 3 Overlay chart

In the chart all the values have been distributed over a one day period.

Click the **Overlay statistics** button  to perform an overlay statistics analysis (see figure 4).

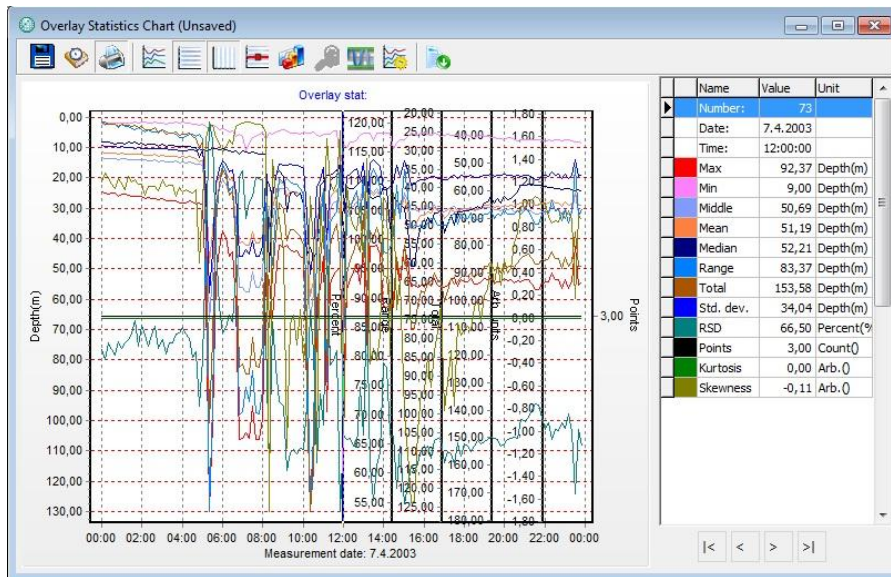



Figure 4 Overlay statistics chart

## History

Click the **History** button  on the chart bar to add comments and view information on the origin of the signal and the progress of the project (see figure 5). Click **Print** to print out the information (see figure 6).

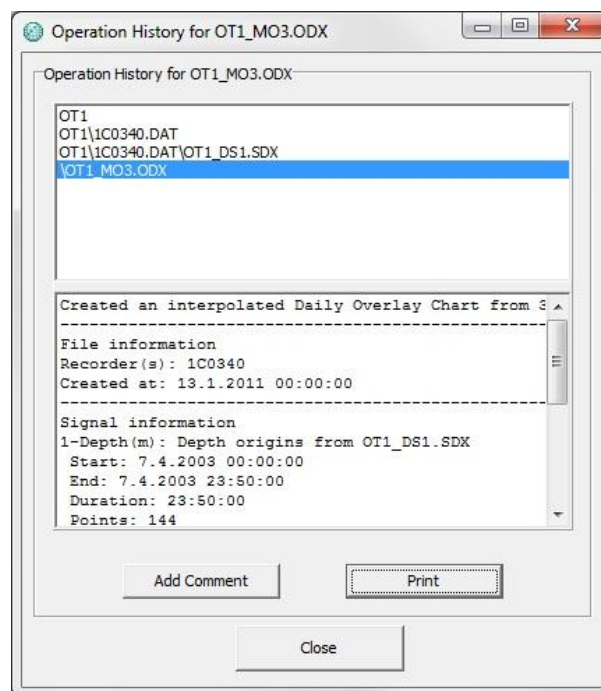


Figure 5 History

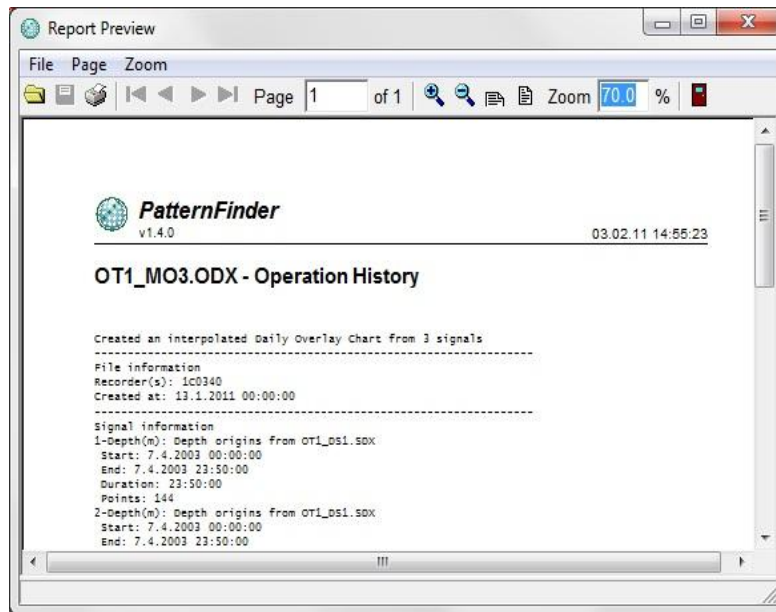


Figure 6 Print preview